

**From:** Nick Wilkinson – FCMI Head of Youth Justice and Safer Young Kent

**To:** Kent Community Safety Partnership – 14<sup>th</sup> October 2015

**Classification:** For Information (UNRESTRICTED)

**Subject:** The Prevent Duty

---

### **Summary:**

This report presents a briefing on the partnership requirements of the introduction of the Prevent Duty under the Counter Terrorism and Security Act 2015 including the:

- Repositioning of the existing Channel Panels ; and
- Establishment of the Kent Prevent Duty Delivery Board.

The draft terms of reference for both these bodies are attached as appendices to the report for information.

The Kent Community Safety Partnership (KCSP) are asked to note this report and the appendices.

---

## **1 Introduction**

- 1.1 The Counter Terrorism and Security Act 2015 contains a range of Local Authority (LA) statutory duties collectively known as the “Prevent Duty”. The prevent duty requires the LAs, and other specific bodies, to act to “prevent people from being drawn into terrorism”. These are: education and child care providers, further education and higher education institutions, the health sector, criminal justice commissioned provision penal institutions and providers and the Police.
- 1.2 LA and all other specified bodies are required to have “due regard” to the duty in the following areas; leadership; working in partnership; staff capabilities and sharing information.
- 1.3 In respect of the new duty revised guidance regarding the delivery of Channel Panels<sup>1</sup> was issued in April 2015. The guidance introduces a number of changes to current working arrangements including in two-tier LA areas requiring those authorities with Social Services responsibilities to lead Channel Panels. As such it is now anticipated that Medway will establish a separate Channel Panel.

---

<sup>1</sup> Channel Duty Guidance April 2015 Section 22  
[https://www.gov.uk/government/uploads/system/uploads/attachment\\_data/file/425189/Channel\\_Duty\\_Guidance\\_April\\_2015.pdf](https://www.gov.uk/government/uploads/system/uploads/attachment_data/file/425189/Channel_Duty_Guidance_April_2015.pdf)

- 1.4 The efficacy of the actions taken by LA and all other specified authorities to meet the requirements of the new duty will be monitored and scrutinised by the Home Office. The detail of how this will take place is yet to be established.
- 1.5 The Office for Security and Counter Terrorism has classified all LAs into three tiers of presenting risk. Kent (all districts and boroughs) is one of the 307 LAs identified as “Tier 3” presenting the lowest level of risk. The Prevent Guidance, however, reminds LAs that no area is risk free and levels of risk can change rapidly.

## **2 Kent Prevent Delivery Board**

- 2.1 The Kent and Medway multi-agency Prevent Steering Group (KMPSG) (currently chaired by KCC’s Head of Youth Justice and Safer Young Kent) was established in 2009. This group has overseen the delivery of the local Channel Panels, considered national developments in relation to the national Prevent agenda and has made links with other strategic bodies including the Kent Safeguarding Children Board (KSCB) to which reporting arrangements have been agreed.
- 2.2 In view of the statutory requirements of the Counter Terrorism and Security Act 2015. it is suggested that this group is reconfigured as the Kent Prevent Delivery Board to ensure there is co-ordinated robust activity commensurate with the degree of national threat. This Board will continue to oversee the activity of the Channel Panel.
- 2.3 A diagram of reporting arrangements to other relevant strategic bodies are presented in Appendix 1 and the Terms of Reference for the Prevent Delivery Board are shown in Appendix 2.

## **3 Channel Panels**

- 3.1 In Kent (and Medway) District and Borough Channel Panels, led by local Community Safety Partnerships, have been in operation since 2012. Channel is a voluntary early intervention mechanism to be used before a person engages or becomes involved in criminal activity and as such they meet on an as required basis. Channel provides tailored support to people who have been identified as at risk of being drawn into terrorism. Channel Panels are responsible for managing the safeguarding risk to both children and adults and, as such, there is a need to establish processes that are compliant with the Children Act 1989 and ” Working Together to Safeguard Children 2015”<sup>2</sup>.
- 3.2 The Community Safety Manager for each local area currently chairs the Local Panel and KCC staff will attend according to the need of the person at risk i.e.

---

<sup>2</sup>

[https://www.gov.uk/government/uploads/system/uploads/attachment\\_data/file/419595/Working\\_Together\\_to\\_Safeguard\\_Children.pdf](https://www.gov.uk/government/uploads/system/uploads/attachment_data/file/419595/Working_Together_to_Safeguard_Children.pdf)

Youth Offending Team for young offenders etc. The 12 Channel Panels report into the Kent and Medway Prevent Steering Group chaired by a KCC officer (Head of Youth Justice and Safer Young Kent).

- 3.3. The Channel Guidance now requires that, in two tier areas, the County Council chair the Panel. The importance of ensuring that Channel has robust links with both Children's and Adults Safeguarding is reinforced through the new guidance.
- 3.4 Appendix 3 presents Terms of Reference for the Kent Channel Panel. These are drawn directly from the revised Channel Guidance and have been amended to suit local conditions in Kent.
- 3.5 An initial meeting of core members will take place to establish full operating guideline which will be subject to approval by the Prevent Duty Delivery Board.

#### **4 Conclusion**

- 4.1 The Prevent activity is a high profile local and national concern. It is hoped that the measures presented by this report act not only to deliver the changes required by the Prevent Duty but also to help ensure that the residents of Kent are prevented from being drawn into terrorism.

#### **5. Recommendations**

- 5.1 KCSP is asked to note this report and the appendices.

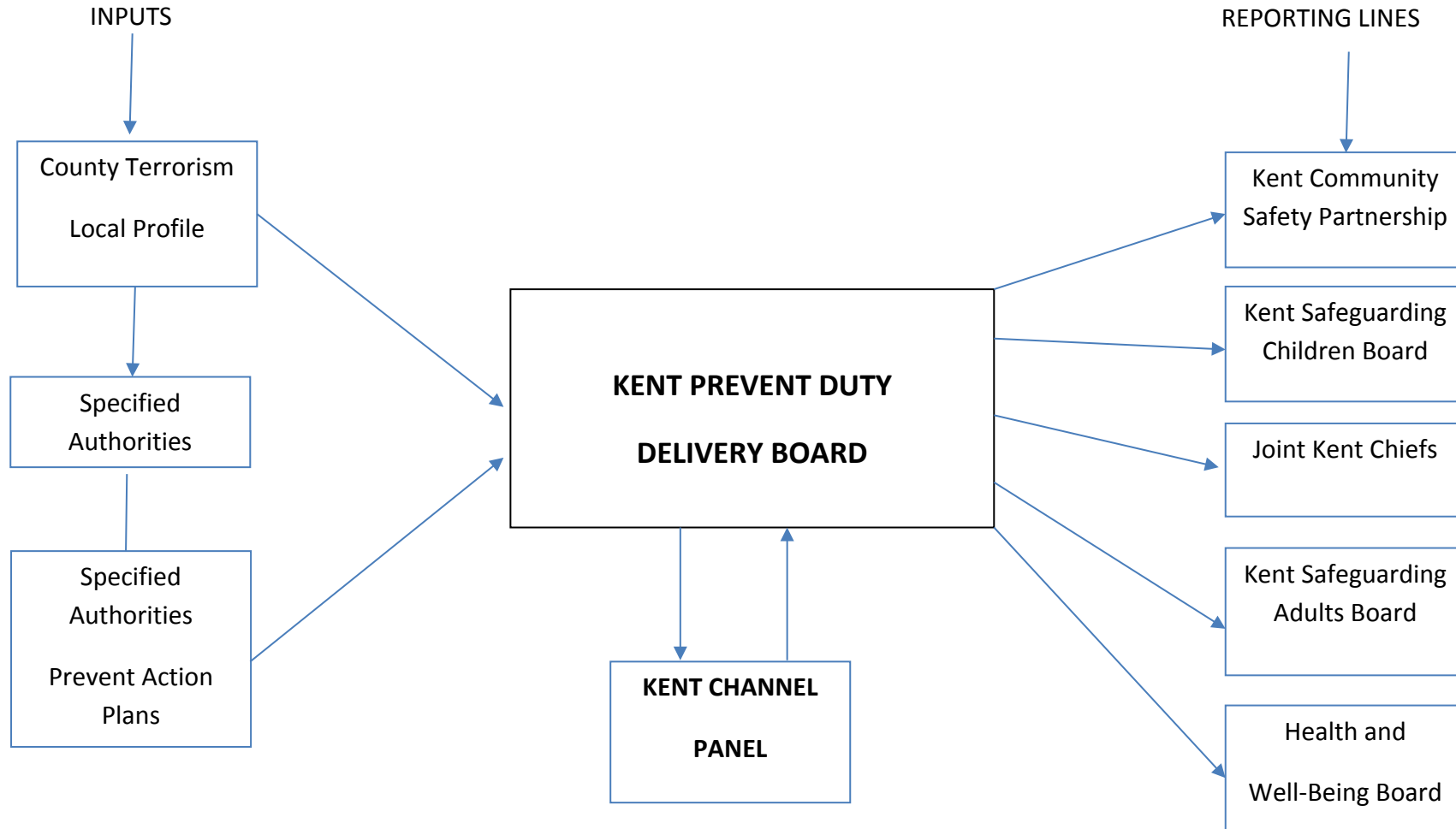
Lead Officers/Contact: Amanda Hornsby  
Policy Manager, ST Directorate  
Direct Line: 03000 416271  
[Amanda.hornsby@kent.gov.uk](mailto:Amanda.hornsby@kent.gov.uk)

Nick Wilkinson, FCMI Head of Youth Justice and  
Safer Young Kent  
Direct line: 03000 417201  
[Nick.wilkinson@kent.gov.uk](mailto:Nick.wilkinson@kent.gov.uk)

Appendix1

STRATEGIC OVERVIEW OF PREVENT ACTIVITY IN KENT

3



<sup>3</sup> As identified in Schedule 6 of Counter Terrorism and Security Act 2015 Specified Authorities are :Local Government, prisons and young offender institutions, probation, schools and other education settings , further education, higher education and the Police,

## **Appendix 2**

## **Draft Prevent Duty Delivery Board Terms of Reference**

### **Context**

The Counter Terrorism and Security Act 2015 introduced the “Prevent Duty” which requires the LA, and other specific bodies, to act to “prevent people from being drawn into terrorism”.

The duty to prevent people from being drawn into terrorism applies to LAs and other specific named bodies. These are: education and child care providers, further education and higher education institutions, the health sector, criminal justice commissioned provision penal institutions and providers and the Police.

LA and all other bodies are required to have “due regard” to the duty in the following areas: awareness of the risks of terrorism; leadership; working in partnership; staff capabilities and sharing information.

LAs have a central role in leading and co-ordinating strategic activity to develop an understanding of the risks of radicalisation in their area and deliver the Prevent Duty. These partnerships must work directly with local communities who may be impacted by and are central to delivering the duty.

### **Purpose**

The Prevent Duty Delivery Board (PDDB) role is to agree levels of risk and co-ordinate Prevent activity across Kent. The PDDB will consider the delivery of activity under the thematic areas of activity contained within the Prevent Duty. These themes are:

- Leadership;
- Staff Capabilities;
- Working in partnership; and
- Information Sharing.

### **Objectives**

The Prevent Duty Delivery Board will:

- Consider and set the strategic direction and priority for Kent’s Prevent activity, in line with national strategy and messages from the sharing of the Counter Terrorism Local Profile (CTLP);
- Agree level of risk within the county and develop a Kent action plan to identify and address levels of risk;
- Co-ordinate activity across a range of strategic bodies to ensure continuity of approach in preventing vulnerable people being drawn into terrorism;
- Co-ordinate response to the requirements of new or revised guidance from central government, including any change to levels of risk within the county;
- Oversee the activity of the County Channel Panel.

## Scope

To achieve these objectives the scope of activity will include the:

- Development of an overview of specified authorities action plans identifying common strengths, weaknesses and gaps;
- Co-ordination of activity to, avoid duplication of activity, share best practice and enhance best value;
- Report to other strategic bodies as appropriate;
- Consider the use of specific funding allocated to the Prevent Duty and any other elements of funding directed or acquired for Prevent activity;
- Commission projects, specific activity or interventions to reduce the risk of people being drawn into terrorism;
- Receive reports from the County Channel Panel;
- Promote the development of awareness of Prevent Duty across the county and work with sectors, institutions and communities where there are risks of radicalisation;
- Monitor the impact of Prevent activities on local communities;
- Work with and seek advice from regional sector specialists to develop Prevent work across the county; and
- Ensure relevant connections are made with Prevent activity in Medway.

## Membership

The standing members of the group will be:

- Corporate Director Social Care Health and Well-being Kent County Council ( KCC Lead Corporate Director) (Chair);
- KCC Prevent Lead Officer;
- KCC Head of Public Protection( Community Safety)
- Kent Police ;
- District Council or Borough Chief Executive representative;
- Health representative;
- Prisons including young offender institutions;
- Probation and Community Rehabilitation Company;
- Office of the Police and Crime Commissioner;
- Further/Higher Education;
- Head Teacher Representation;
- South East Counter Terrorism Unit[
- Representation from the Independent Police Advisory group and/or community representatives sourced from District Councils;

As particular to Kent

- Immigration Enforcement
- Kent Fire and Rescue Service

Other partners, organisations and representatives will be invited when required or in response to a specific need.

## **Frequency and Administration**

Meetings will be held on a bi-monthly basis initially. This may be reduced to quarterly once action plans are established.

Papers will be circulated at least 5 days prior to Board meetings. Draft minutes will be produced for distribution by email no later than 14 days following each meeting.

## **Review**

These Terms of Reference will be subject to annual review.

The issues in relation to these terms of reference please contact:

Head of Youth Justice and Safer Young Kent  
Direct line: 03000 417201  
[Nick.wilkinson@kent.gov.uk](mailto:Nick.wilkinson@kent.gov.uk)

### **Context**

The Counter Terrorism and Security Act 2015 is intended to secure effective local co-operation and delivery of Channel in all areas and to build on the good practice already operating in many areas. In practice, the legislation requires:

- a. local authorities to ensure that a multi-agency panel exists in their area;
- b. the local authority to chair the panel;
- c. the panel to develop a support plan for individuals accepted as Channel cases;
- d. the panel to consider alternative forms of support, including health and social services, where Channel is not appropriate; and
- e. all partners of a panel (as specified in Schedule 7), so far as appropriate and reasonably practicable, to cooperate with the police and the panel in the carrying out of their functions.

### **Purpose**

Channel is a programme which focuses on providing support at an early stage to people who are identified as being vulnerable to being drawn into terrorism. The programme uses a multi-agency approach to protect vulnerable people by:

- a. identifying individuals at risk;
- b. assessing the nature and extent of that risk; and
- c. developing the most appropriate support plan for the individuals concerned

Channel Panels are called as required when a referral is received and may be an appropriate process for anyone who is vulnerable to being drawn into any form of terrorism. Channel is a safeguarding and public protection measure that aims to ensure that vulnerable children and adults of any faith, ethnicity or background receive support before their vulnerabilities are exploited by those that would want them to embrace terrorism, and before they become involved in criminal terrorist related activity.

Success of the programme is very much dependent on the co-operation and co-ordinated activity of partners. It works best when the individuals and their families fully engage with the programme and are supported in a consistent manner.

### **Scope**

To prevent vulnerable individuals from being drawn into terrorism the Kent Channel Panel will:

- Risk assess referrals by using the Channel Vulnerability Assessment Framework and agree the most appropriate resource to meet their needs;



- Ensure an effective support plan is put in place and that consent is sought from the individual prior to the plan being activated
- Identify and commission a suitable intervention to offer support in order to reduce the level of threat, vulnerability and risk.
- Carry out full reviews of each channel referral at 6 months and 12 months
- Ensure relevant intelligence is shared between Kent and Medway Channel Panels.

## **Reporting**

The Kent Channel Panel will report to the Prevent Duty Delivery Board at each meeting of the Board.

## **Membership (as specified by Section 6 of the Counter Terrorism and Security Act 2015)**

The standing members of the group will be:

- KCC Prevent Lead Officer(Chair);;
- KCC Head of Public Protection( Community Safety)
- Kent Police Divisional Superintendent
- Kent Police Protecting Vulnerable People representative;
- Kent Police Channel Practitioner.
- KCC Children's/ Adults Safeguarding Lead;

As require determined by the needs of the individual being considered including location and age:

- KCC Children's Service representation according to individual child's needs
- School or Education setting representation as appropriate
- Health/ Mental Health representative as appropriate( for both Adults and Children's );
- Prisons including young offender institutions;
- Probation and Community Rehabilitation Company;
- Further/Higher Education;
- South East Counter Terrorism Unit
- Relevant Community Safety Manager

Other partners, organisations and representatives will be invited when required or in response to a specific need.

## **Review**

These Terms of Reference will be subject to annual review.

The issues in relation to these terms of reference please contact:

Head of Youth Justice and Safer Young Kent  
 Direct line: 03000 417201  
[Nick.wilkinson@kent.gov.uk](mailto:Nick.wilkinson@kent.gov.uk)